

CONNECTING ACTIONS TO CONNECTIVITY; A CASE STUDY

VICTORIA HARRIS, DR SI THU AUNG, HLAING AUNG, AARON OPPENHEIMER, STEFAN BAUMGARTNER, CHRIS ISAACS, MO TOBIN



Landscape and benchmark determination



Development of implementations planning & permissions



Intervention: Action dashboard design

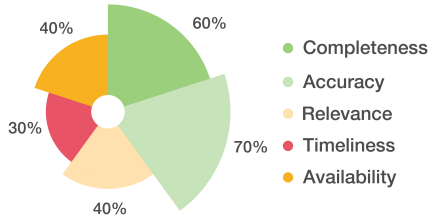


Interventions: Data cleaning and training



Managing Change; mentoring, monitoring, reporting

Data Quality



Completeness – What % of patient data, manual entry data is complete

Accuracy – Contacts, calibration and warranty as well as review of request forms and record books

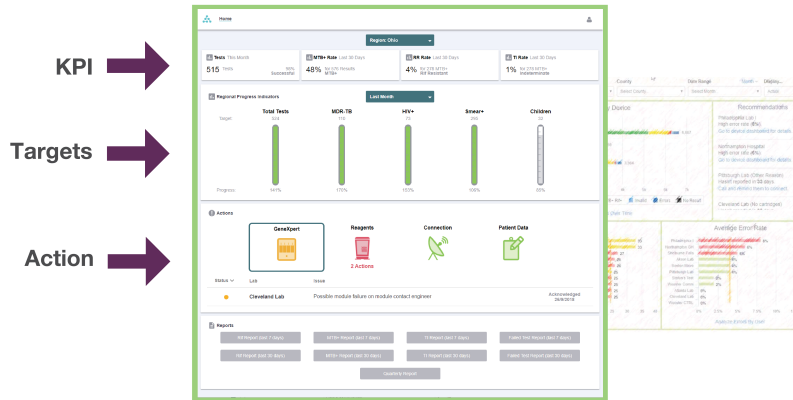
Relevance – Define what each stakeholder group should be able to do or see and compare this to what is possible.

Timeliness – Review connectivity and time for test uploads as well as how quickly manual updates are made and how quickly reports and notifications are done.

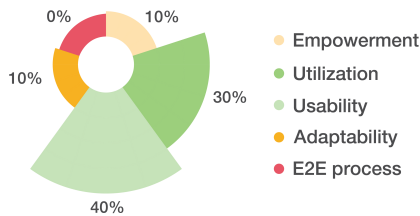
Availability – Can everyone access all necessary data available to correct groups, and not to others

Action Dashboard Design

- Stakeholders: Laboratory and regional coordinators
- Goal: Link all the information to a specific action
- Goal: Give people what they need to know in one place
- Monitor: Use of dashboard, actions taken in response



Data Use



Empowerment – Define the stakeholder groups, identify users and determine minimum access online or SMS

Utilization – Log ins, page views, SMS, action taken

Interface Usability – Fit for purpose exercise and questionnaires

Adaptability – Can reports, dashboards, notifications be modified locally

End to end process – Review the available tools, SOP, manual, job descriptions

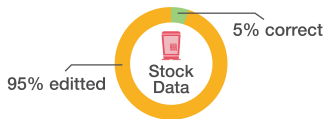
Data Cleaning

Improving data quality

To take action the data presented must be accurate

To take action data must be reported on time

To take action people must get the information



Outcomes



Rapid identification of failing modules

- 12 modules identified
- 60% reduction in 'time to fix'
- Reduced impact on patient care
- Reduced program costs



50% Regularly Filling In Stock.

- Four fold increase in timely stock up dates - 85% complete
- Empowered lab staff to enter stock counts
- Rapid identification of reagent related errors



95% Sites Online

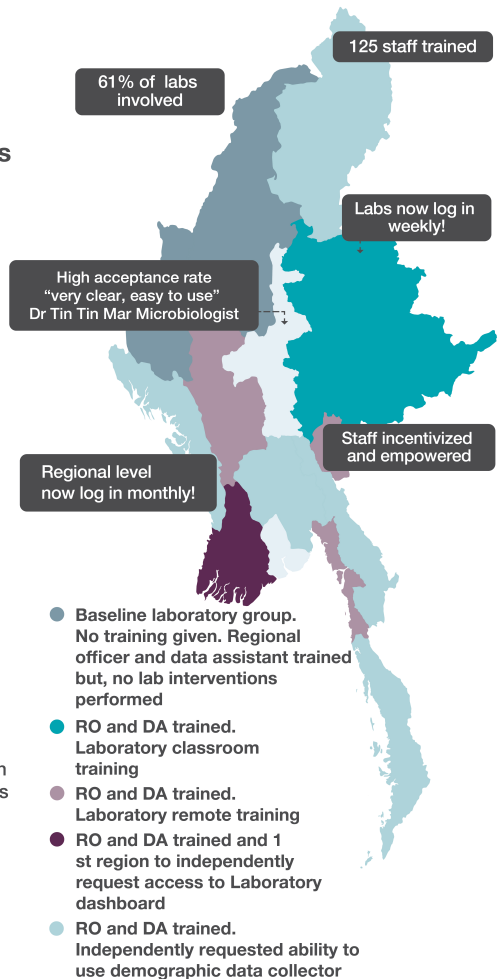
Sites Reporting Offline Status

- Alerts to local staff who are empowered to take action
- Offline alerts used to justify changing mobile providers to improve connectivity



115 Unique Log-ins

- Ability to monitor completeness of laboratory data entry
- Monitor algorithm implementation with improved data collection now able to set and monitor testing targets to increase bacteriological confirmation



- Baseline laboratory group. No training given. Regional officer and data assistant trained but, no lab interventions performed
- RO and DA trained. Laboratory classroom training
- RO and DA trained. Laboratory remote training
- RO and DA trained and 1st region to independently request access to Laboratory dashboard
- RO and DA trained. Independently requested ability to use demographic data collector

Amplifying the Benefits

- Package this data utilisation approach for widespread adoption throughout LMICs
- Campaign for actionable data without borders